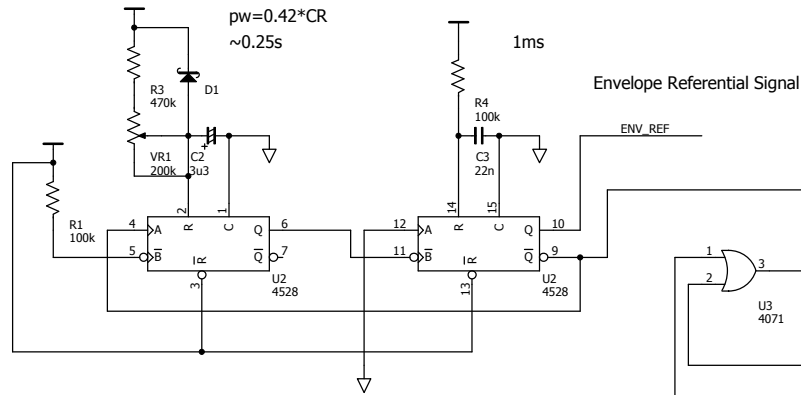
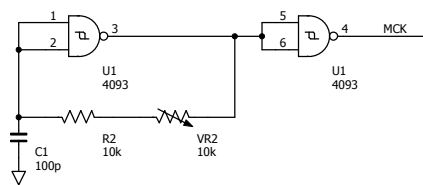


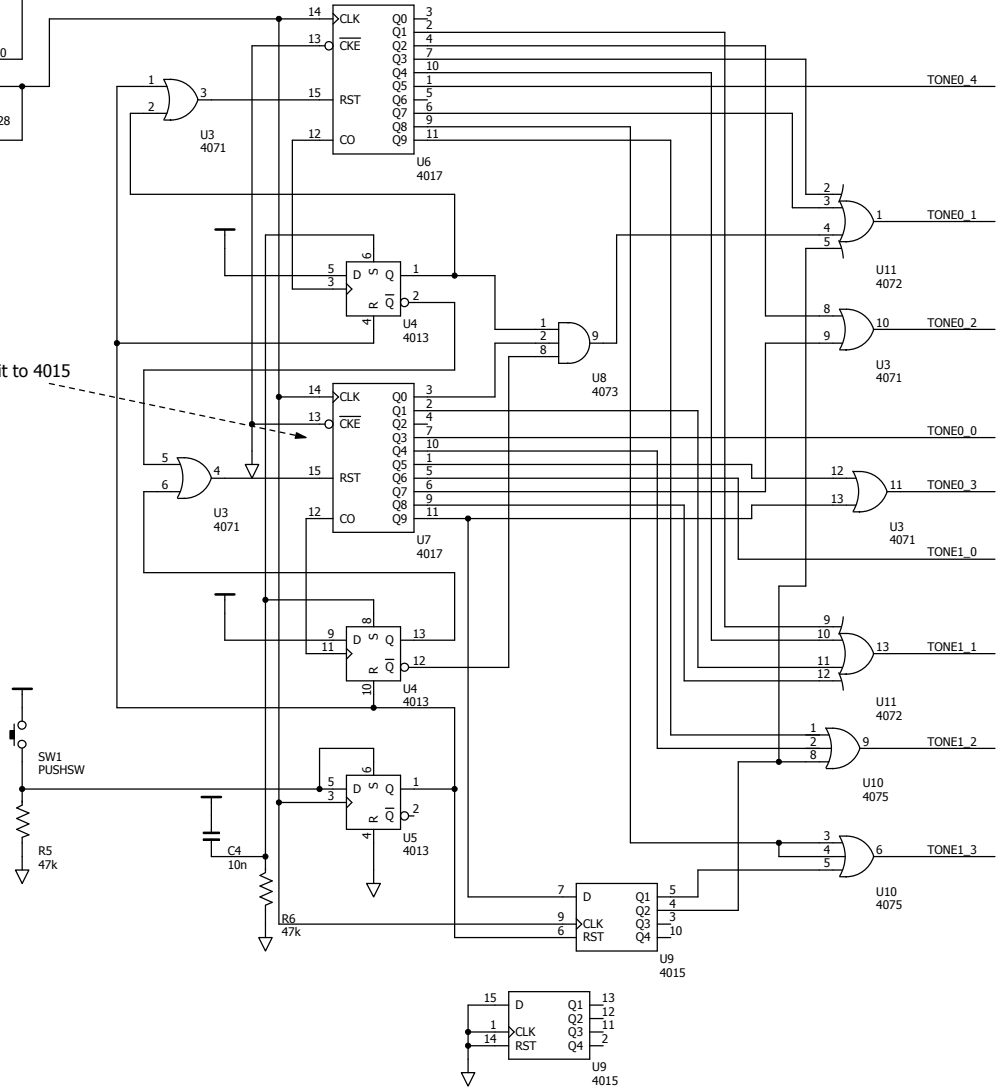
Note Timing Generator
Phase: 0-20

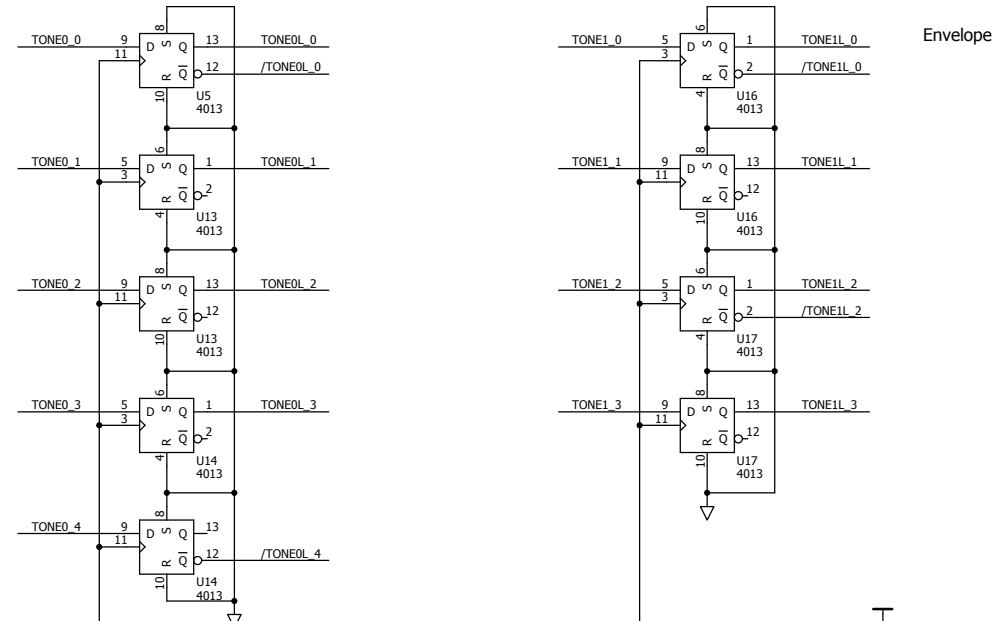


Tone Timing Generator
MCK = 664kHz

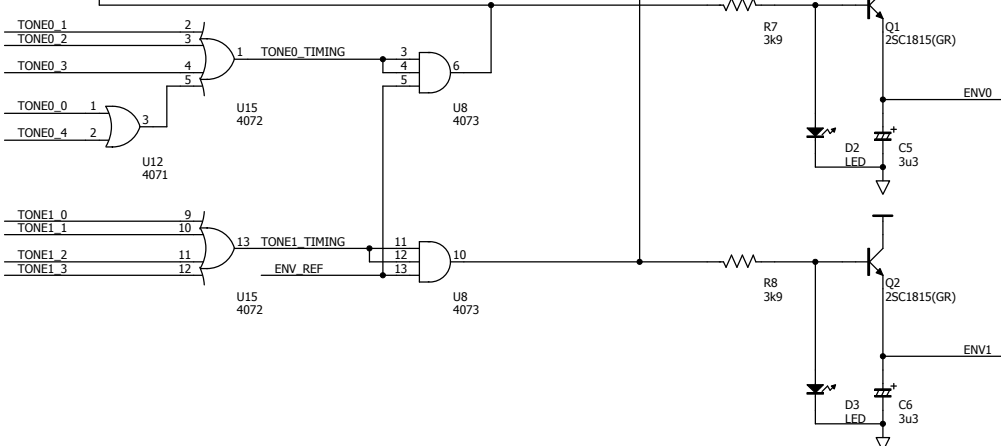


- Recommend to replace it to 4015





Envelope



-LED or ZD for voltage stability;
Use high brightness type if you want to let it blink

Table 1 (8x5 bits)

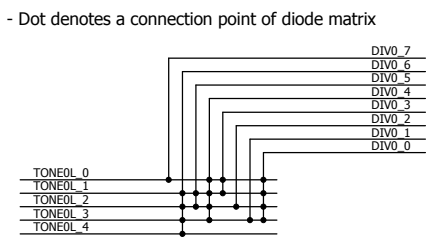
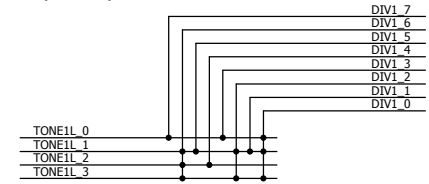


Table 2 (8x4 bits)



- Implement as logic circuit

